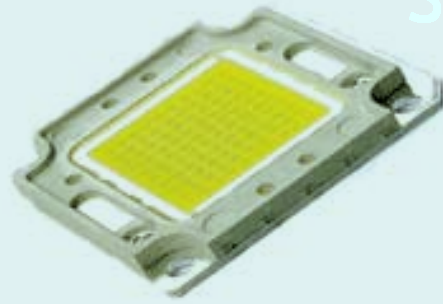


# LED Tunnel Lighting

## Advanced LED Lighting Solutions

### Material

High purity aluminum reflector and heat sink;  
5mm thick, high intensity tempered glass cover;  
Powerful LED with high efficiency LED driver;



### Features

Uses a single powerful LED as the light source; utilizes the specially designed multichip single module and a high brightness semiconductor chip.

Heat from the LED is removed through the heat dissipation wing and also by the air cross-ventilation. Ideal for humid environments.

5 - 10 year life depending on usage.

The lights are sealed with an age resistant silicone rubber and have passed the anodic oxidation and plastic spraying tests. Meets IP65 standards.

An aluminum reflector is utilized so as to control the LED light pertinently in a needed area. This improves the uniformity of the light and the utility ratio of energy. This in turn has the advantage of power-saving.

Energy savings over 50%.

No ill glare; no flickering.

No lead, hydrargyrum or any other harmful chemicals.

Reaches its intensity of light instantly unlike other light sources.

Can be integrated with solar and wind electricity.

1-Year Warranty  
(repair or replacement)

"bringing renewable  
& efficient alternatives  
to home environments"

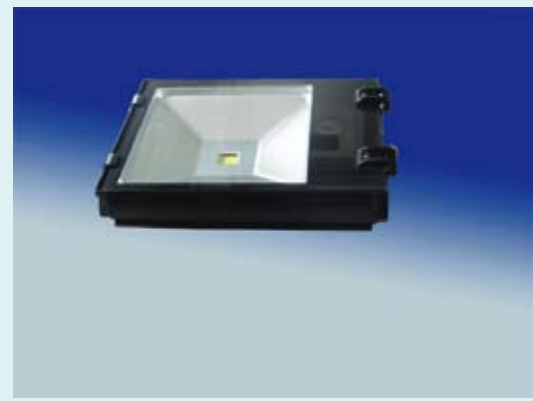


**BREATHE**  
**SYSTEMS**®

[www.breathesystems.com](http://www.breathesystems.com)

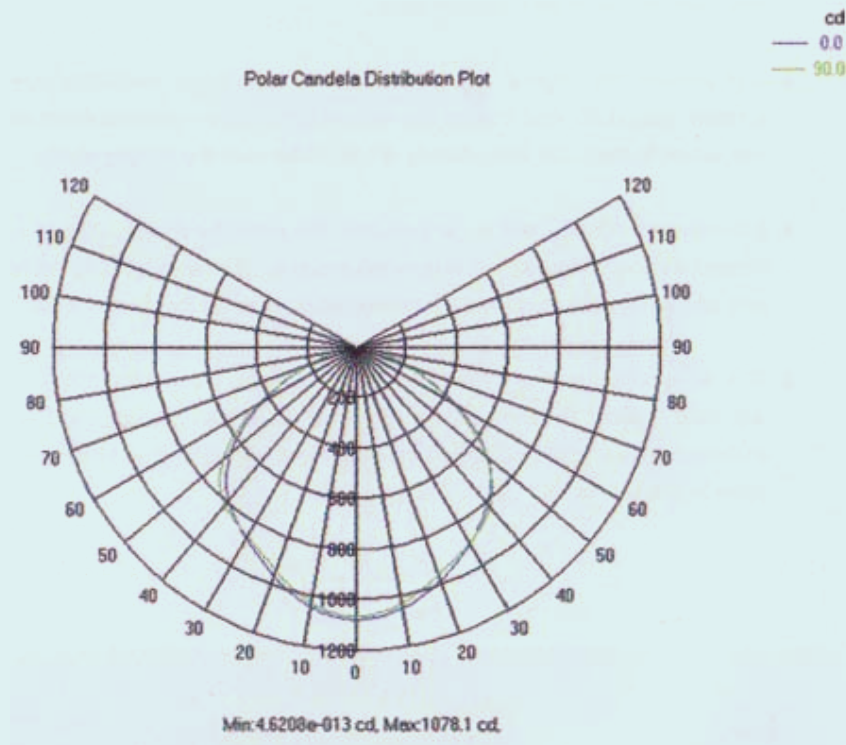
# LED Tunnel Lighting

## SE370TL Series

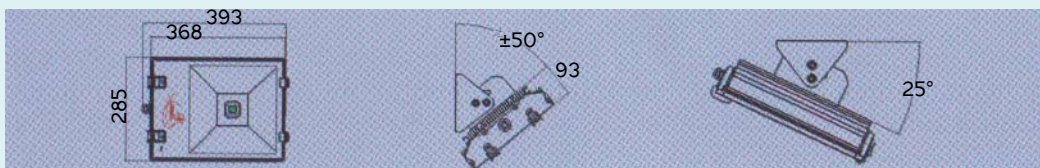


Model	LED Power	Input Voltage	Frequency	Power Factor	Lumens / Watt	Initial Luminous Flux
SE-370TL010W	10W	85V - 265V AC	50Hz - 60Hz	>0.9	80lm	800lm
SE-370TL015W	15W	85V - 265V AC	50Hz - 60Hz	>0.9	80lm	1600lm
SE-370TL018W	18W	85V - 265V AC	50Hz - 60Hz	>0.9	80lm	2400lm
SE-370TL020W	20W	85V - 265V AC	50Hz - 60Hz	>0.9	80lm	3200lm
SE-370TL025W	25W	85V - 265V AC	50Hz - 60Hz	>0.9	80lm	4000lm
SE-370TL030W	30W	85V - 265V AC	50Hz - 60Hz	>0.9	80lm	4800lm
SE-370TL035W	35W	85V - 265V AC	50Hz - 60Hz	>0.9	80lm	5600lm

Also compatible with 12V, 24V & 36V DC



Efficiency of Light	Effective Light Angle	Color Rendering Index	Color Temperature	Life Span	Net Weight
>90%	75°	Ra>80	2700K~7000K	>30,000 Hours	7.39 kg



"bringing renewable  
& efficient alternatives  
to home environments"

**BREATHE**  
**SYSTEMS**®

www.breathesystems.com

Switzerland +41 44 586 77 00 | UK +44 121 288 8383 | USA +1 646 217 0888 | Hong Kong +852 8197 2777 | Australia +61 7 3103 3357

specifications are subject to change without notice

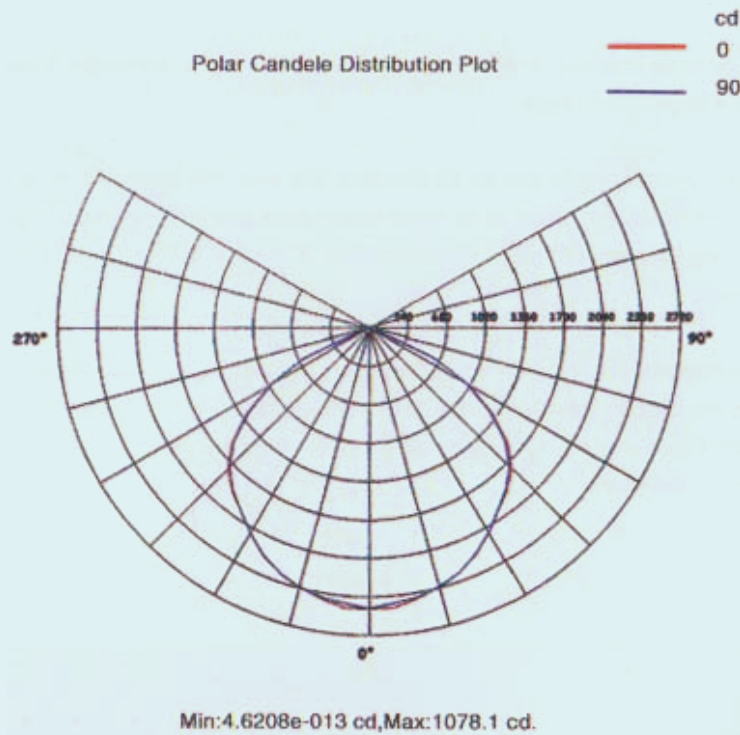
# LED Tunnel Lighting

## SE570TL Series

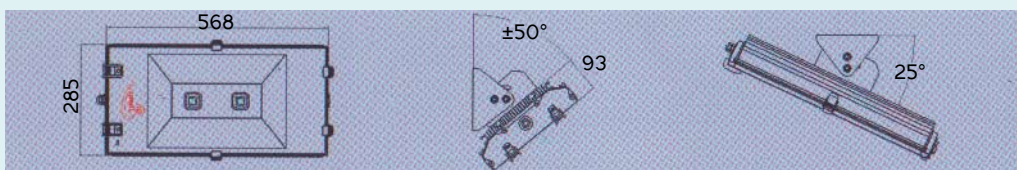


Model	LED Power	Input Voltage	Frequency	Power Factor	Lumens / Watt	Initial Luminous Flux
SE-570TL080W	80W	85V - 265V AC	50Hz - 60Hz	>0.9	80lm	6400lm
SE-570TL090W	90W	85V - 265V AC	50Hz - 60Hz	>0.9	80lm	7200lm
SE-570TL100W	100W	85V - 265V AC	50Hz - 60Hz	>0.9	80lm	8000lm
SE-570TL110W	110W	85V - 265V AC	50Hz - 60Hz	>0.9	80lm	8800lm
SE-570TL120W	120W	85V - 265V AC	50Hz - 60Hz	>0.9	80lm	9600lm
SE-570TL130W	130W	85V - 265V AC	50Hz - 60Hz	>0.9	80lm	10400lm
SE-570TL140W	140W	85V - 265V AC	50Hz - 60Hz	>0.9	80lm	11200lm

Also compatible with 12V, 24V & 36V DC



Efficiency of Light	Effective Light Angle	Color Rendering Index	Color Temperature	Life Span	Net Weight
>90%	75°	Ra>80	2700K~7000K	>30,000 Hours	10.60 kg



“bringing renewable  
& efficient alternatives  
to home environments”

**BREATHE**  
**SYSTEMS**®

www.breathesystems.com

Switzerland +41 44 586 77 00 | UK +44 121 288 8383 | USA +1 646 217 0888 | Hong Kong +852 8197 2777 | Australia +61 7 3103 3357

specifications are subject to change without notice