

LED MR16

SE003MR16SBEC

Low Power Consumption (3W)

High Brightness (up to 170lm)

Long Life (>30,000hrs)

Easy Installation into GU5.3 Base Socket



- Unique Integrated Lens and Lampshade Design
- No Flickering
- No Humming
- No Lead or Mercury
- No UV Rays or Infrared Radiation
- Impact Resistant; Shock Proof; No Glass or Filament
- Adapter for AC Applications
- Up to 80lm / Watt



Model Number	SE003MR16SBEC
Type	High Power LED Spot Lamp
Dimension	Φ 50mm x 45mm
Working Voltage	12V AC/DC (85V-264V AC when working with external adapter)
Emission Color	Pure White, Warm White with (RGB and Yellow optional)
Color Temperature	3000K - 7000K
CRI	Ra > 70
Luminescence Angle	30°
Total Lumens	170lm
Power Consumption	3W
Weight	34g
Lamp Lens	Acryl
Lamp Cup Radiator	Alloy Aluminum Plating
Lamp Base	GU5.3
Certifications	CE; RoHS; UL
Packing	100pcs/Carton
Carton Size (mm)	600 x 310 x 162
Container QTY	20' - 90,000pcs; 40' - 204,000pcs

1-Year Warranty
(repair or replacement)

"bringing renewable
& efficient alternatives
to home environments"

BREATHE
SYSTEMS®

www.breathesystems.com

Switzerland +41 44 586 77 00 | UK +44 121 288 8383 | USA +1 646 217 0888 | Hong Kong +852 8197 2777 | Australia +61 7 3103 3357

specifications are subject to change without notice

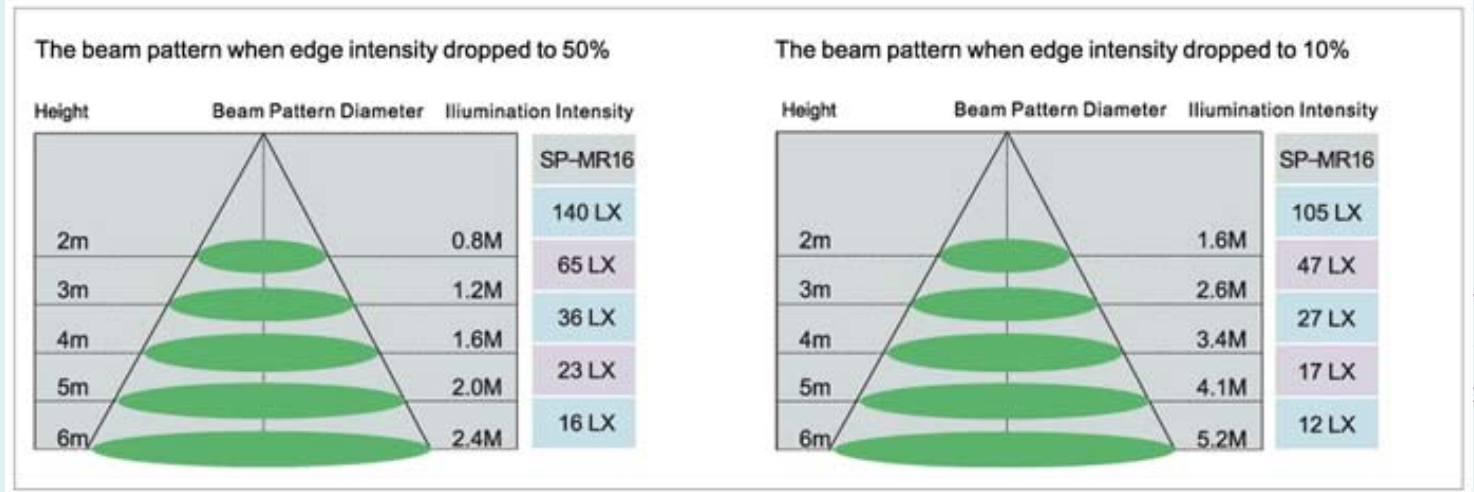


LED MR16

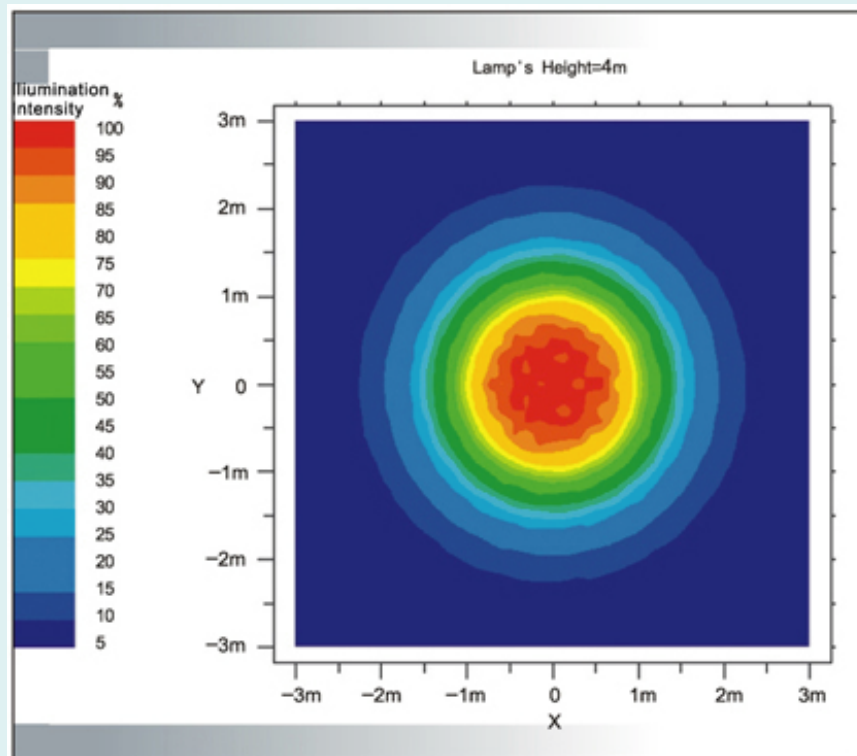
SE003MR16SBEC

Photometric Performance

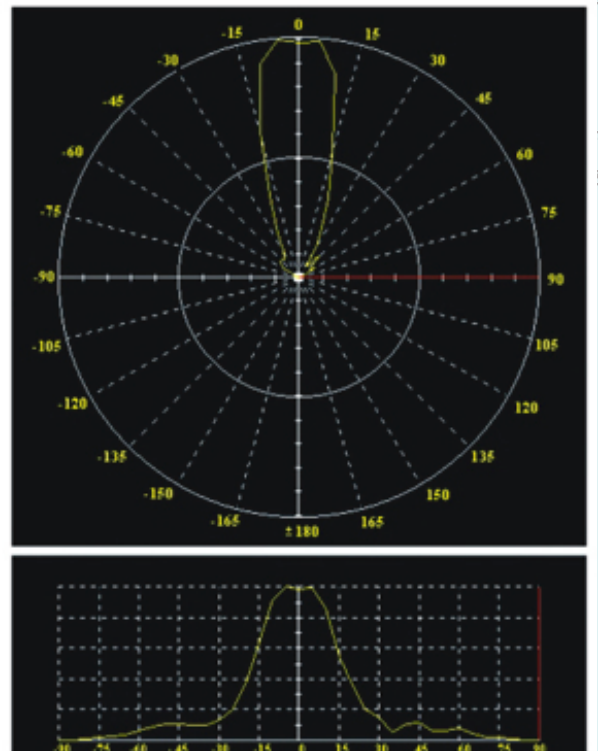
The Different Height Illumination Distribution



Plain Equiluminous Distribution (Beam Pattern)



Distribution Curve



"bringing renewable
& efficient alternatives
to home environments"

BREATHE
SYSTEMS®

www.breathesystems.com

Switzerland +41 44 586 77 00 | UK +44 121 288 8383 | USA +1 646 217 0888 | Hong Kong +852 8197 2777 | Australia +61 7 3103 3357

specifications are subject to change without notice